

Welcome to Dreamland

The Changing Face of a Petaluma Neighborhood

Mid-1990's



6 "C" Street

In 1885, this was the site of one of A. L. Whitney's grain and potato warehouses. In 1921 it became the location for the first Hunt and Behren's Feed Mill, which was operated until 1947. The site was later taken over by G. P. McNear, and by 1958 the mill and warehouse had been removed from this site. In 1978, a local realtor moved a 1880, two-story, Greek Revival house from the Southwest corner of "C" Street and Petaluma Boulevard South to this site.

102 "D" Street

Although known as the McKinney Livery Stable, John Grimes operated the Livery on this site from around 1900 through 1920, when G. P. McNear bought the land and leased the building to Dr. John Tierney, a veterinarian. This structure has been relocated to McNear Island and will be incorporated in a city park, housing the Petaluma Agriculture and River Heritage Center.

198 "D" Street

In 1926, G. P. McNear donated this land to the City of Petaluma. Petaluma Fire Station No. 1 was designed by local architect Brainerd Jones, and constructed in 1938 with funding from a WPA Grant. The addition (2nd Street side) was completed in 1970.

13 Petaluma Boulevard South

This large, Mission Revival style, brick building is historically known as the Sanderson Ford Motor Company. The structure is actually four buildings in one, the oldest having been constructed in 1912 (northeast corner of the building), and the most recent in 1930 (southeast corner). Local architect Brainerd Jones designed the showrooms in 1917 and 1923. This complex of buildings was a contributor to Petaluma's nationally registered Downtown Historic District. The building has been adaptively re-used and includes retail and office space, as well as movie screens.

15 Petaluma Boulevard North

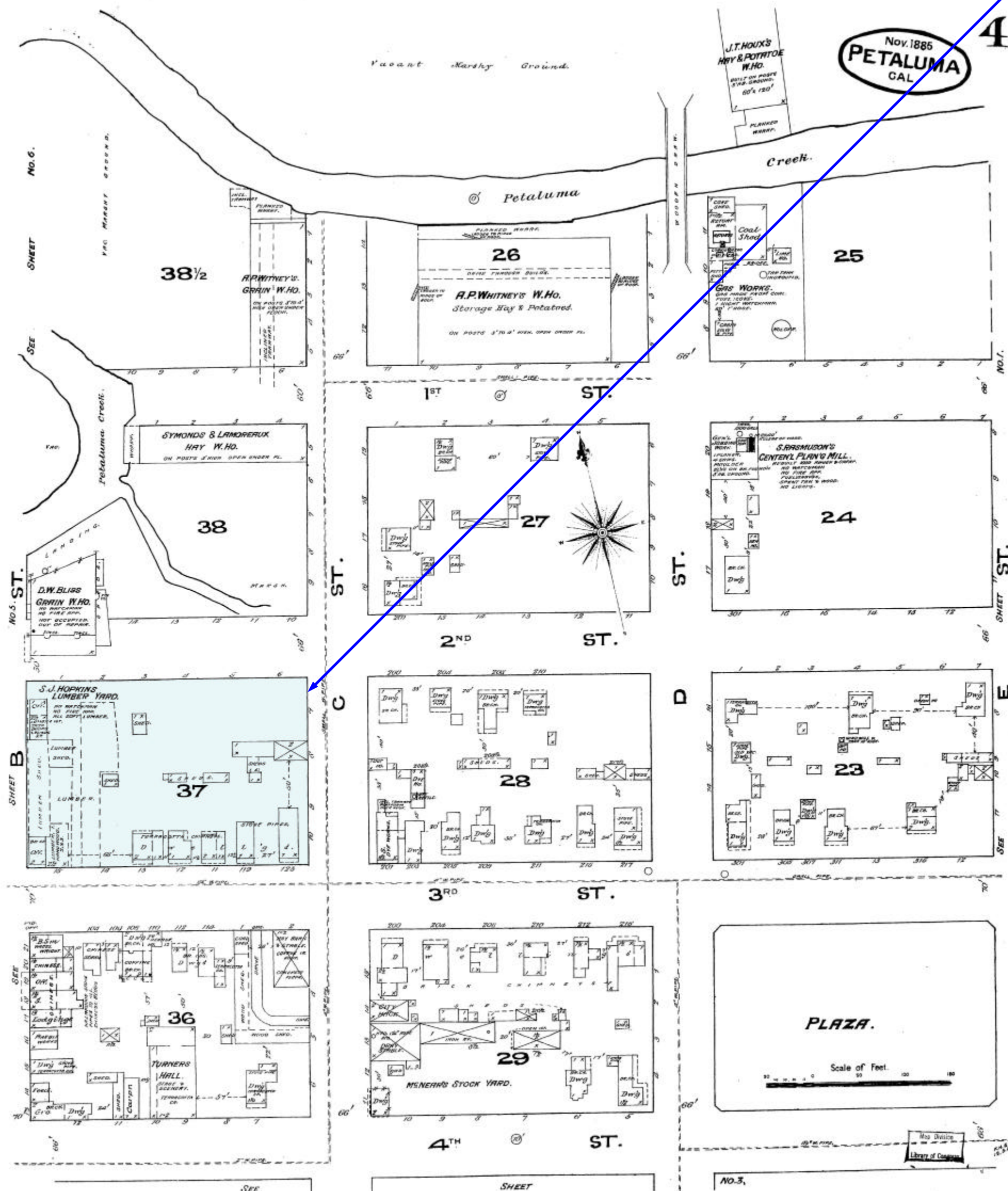
This is the site of the Petaluma Steam Laundry Company, which relocated from 118 East Washington sometime between 1915 and 1917. The building remained on this site through 1965, when it was being used for auto storage. This site is now part of Petaluma's new Theatre District.



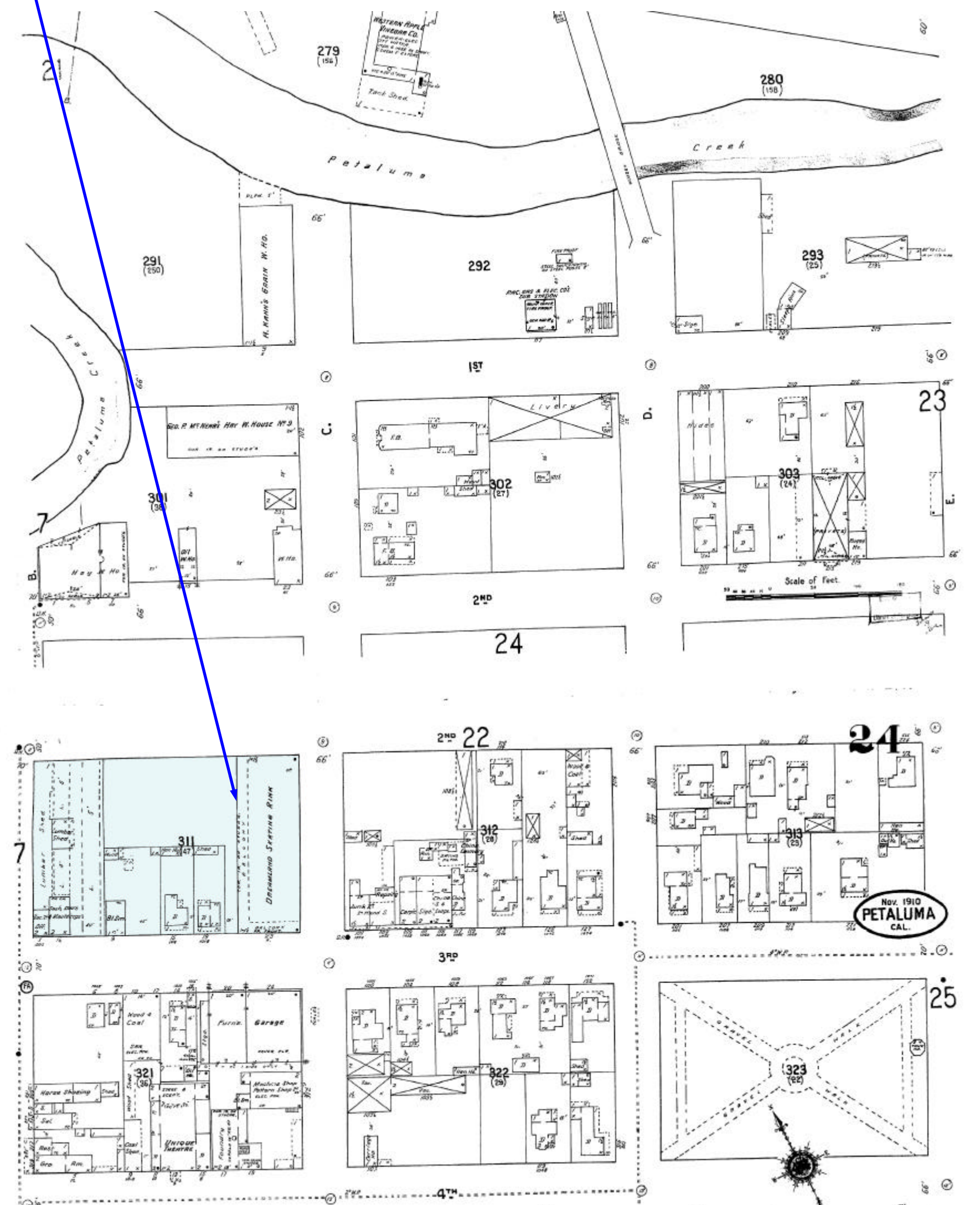
19 Petaluma Boulevard South

This was the site of the Dreamland Skating Rink, a wood-framed building with a Mission Revival styled false-front, designed by Brainerd Jones. Ground breaking for what the *Petaluma Argus* described as a "monster frame structure" occurred in 1906. This site is also part of the new Theatre District.

1885



1910



Credits
Photos courtesy of: The Petaluma Historic Library and Museum and the Sonoma County Museum. This poster was produced by William Roop of Archaeological Resource Service for Basin Street Properties. Background air photo courtesy of the City of Petaluma.

Visit the Petaluma Historical Library and Museum